

116°32.000' W

116°31.000' W

116°30.000' W

116°29.000' W

116°28.000' W

WGS84 116°27.000' W

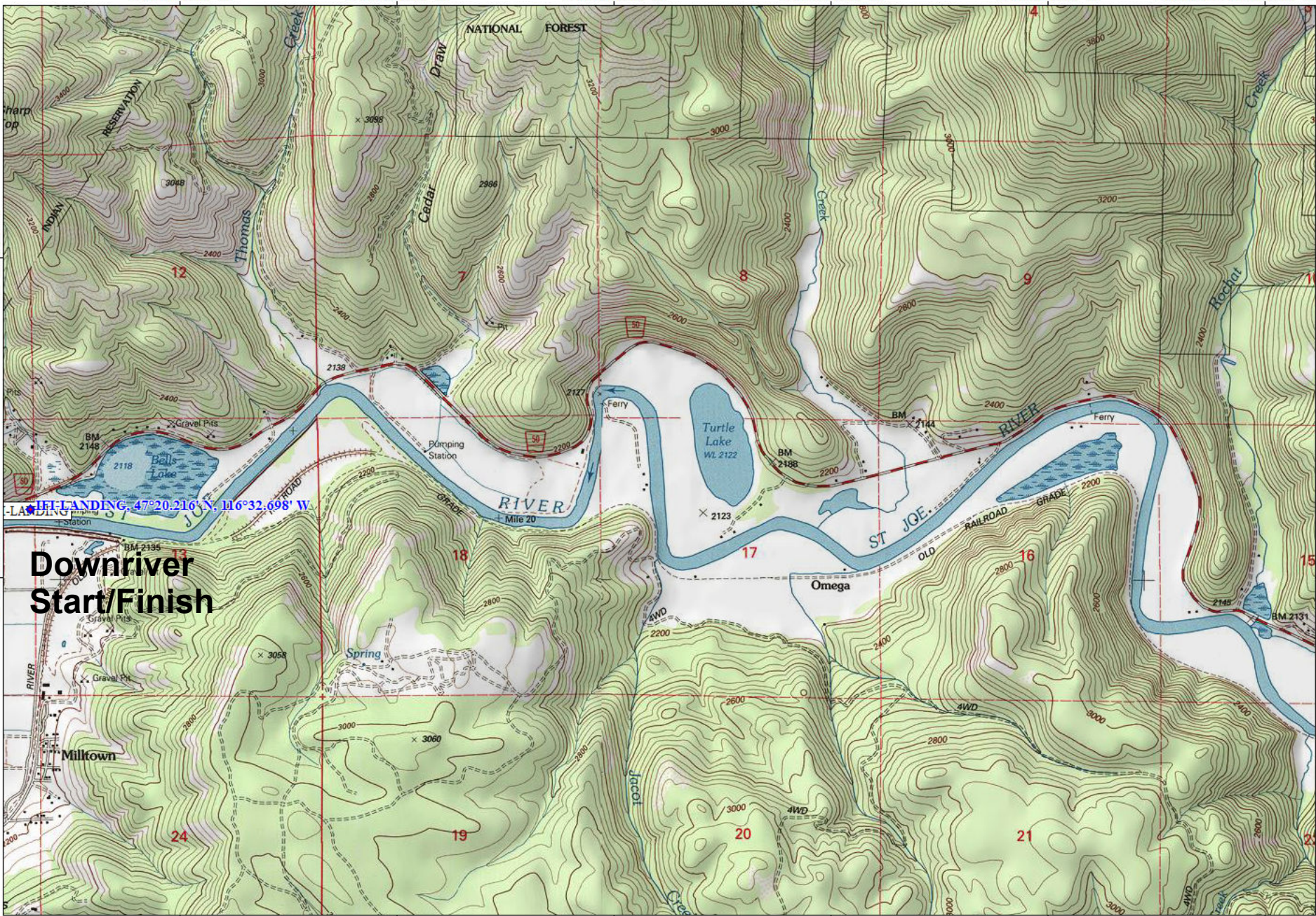
TOPO! map printed on 01/03/12 from "Idaho.tpo" and "Untitled.tpg"

47°21.000' N

47°21.000' N

47°20.000' N

47°20.000' N



**Downriver Start/Finish**

LANDING, 47°20.216' N, 116°32.698' W

116°32.000' W

116°31.000' W

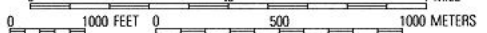
116°30.000' W

116°29.000' W

116°28.000' W

WGS84 116°27.000' W

TN 16°



Printed from TOPO! ©2000 National Geographic Holdings (www.topo.com)