

116°26.000' W

116°25.000' W

116°24.000' W

116°23.000' W

116°22.000' W

WGS84 116°21.000' W

46°31.000' N

46°31.000' N

46°30.000' N

46°30.000' N

46°29.000' N

46°29.000' N

116°26.000' W

116°25.000' W

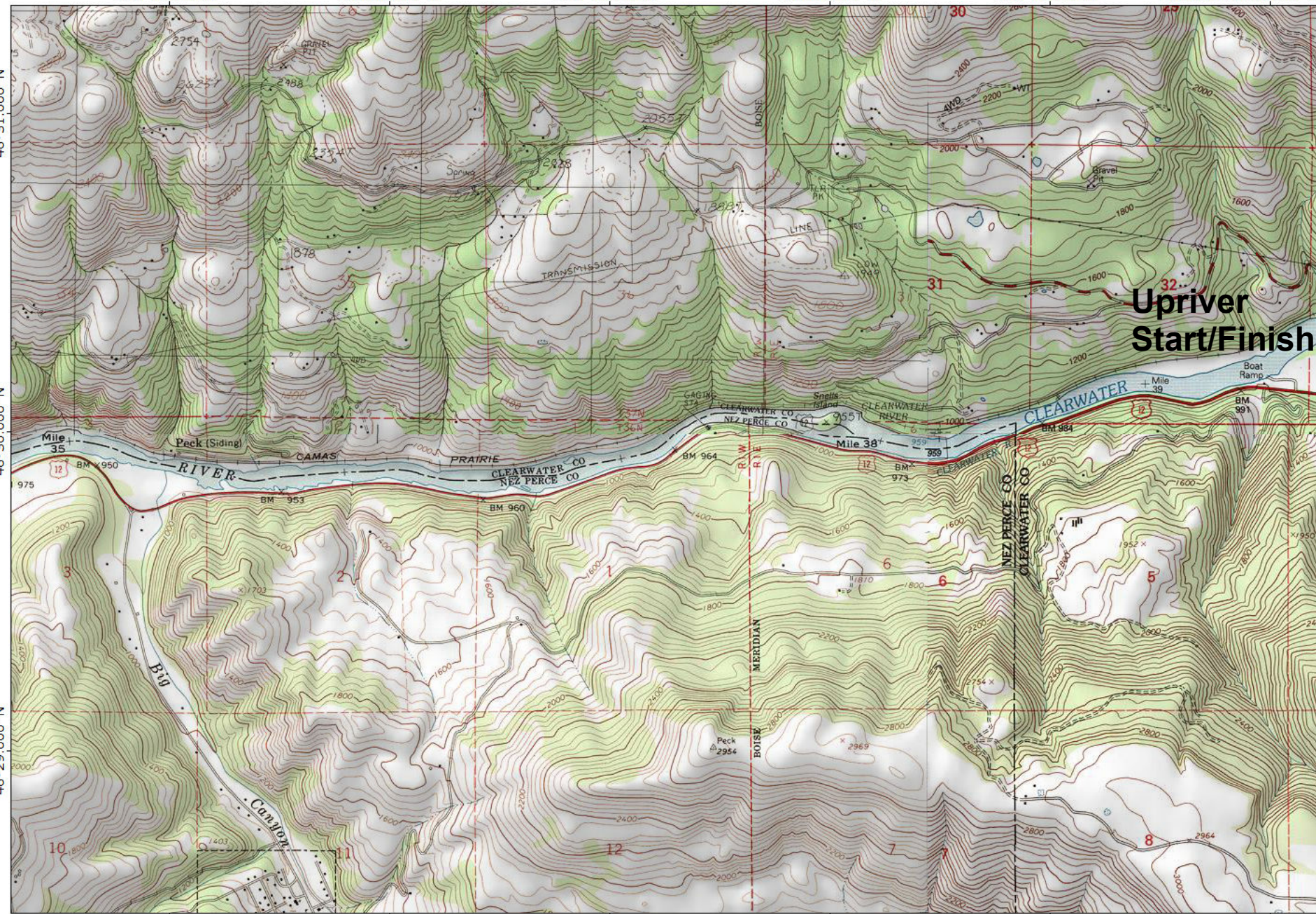
116°24.000' W

116°23.000' W

116°22.000' W

WGS84 116°21.000' W

**Upriver
Start/Finish**



TN \uparrow MN
15½°

0 1000 FEET 0 500 1000 METERS
1 MILE
Printed from TOPO! ©2000 National Geographic Holdings (www.topo.com)